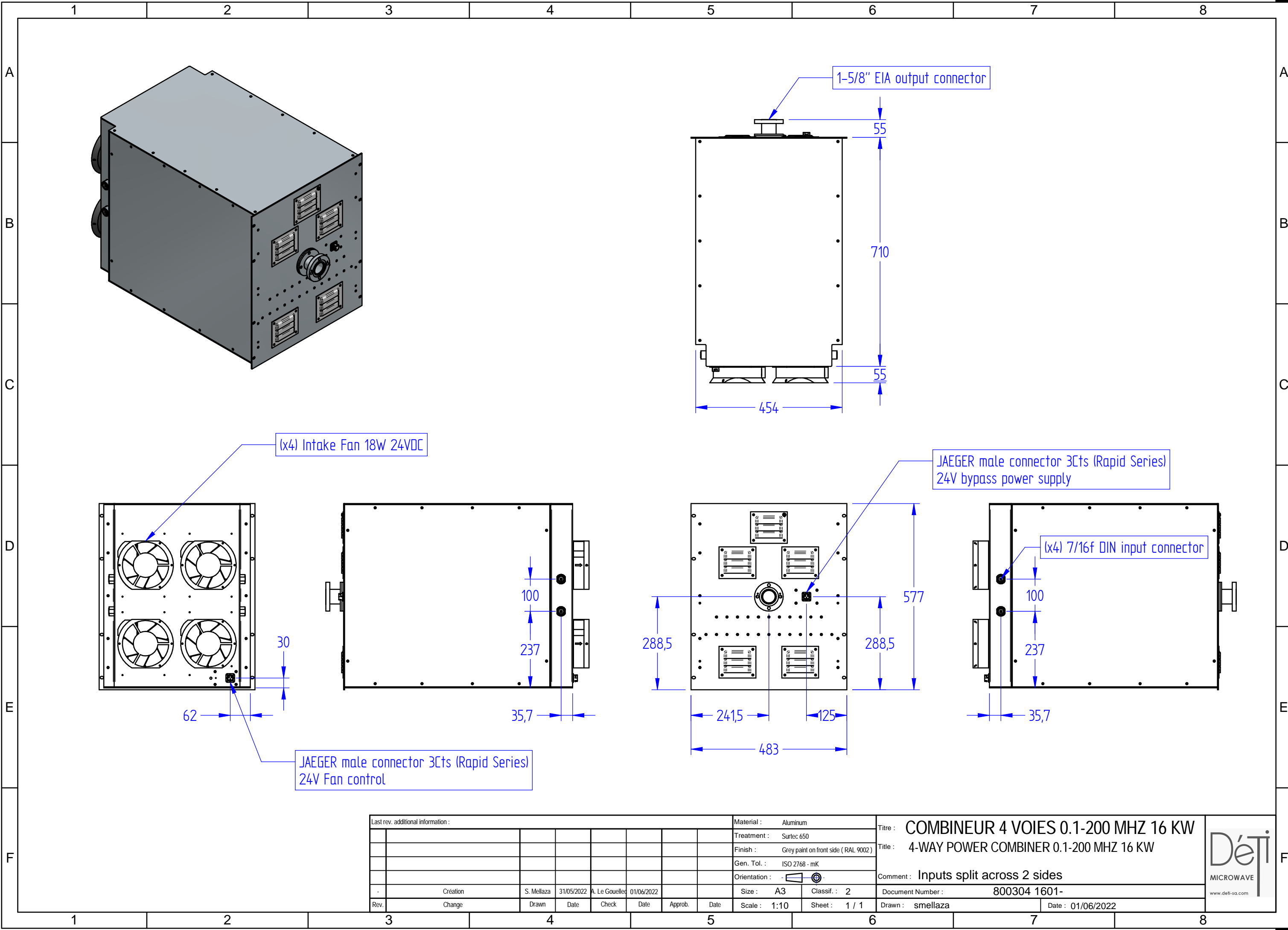


This document is subject to change without notice
This document is the exclusive property of DÉTI SAS and cannot be communicated to third parties or reproduced without prior written permission



Last rev. additional information :						Material : Aluminum		Titre : COMBINEUR 4 VOIES 0.1-200 MHZ 16 KW	
						Treatment : Surtec 650		Titre : 4-WAY POWER COMBINER 0.1-200 MHZ 16 KW	
						Finish : Grey paint on front side (RAL 9002)		Comment : Inputs split across 2 sides	
						Gen. Tol. : ISO 2768 - mK		Document Number : 800304 1601-	
						Orientation :		Date : 01/06/2022	
- Création		S. Mellaza		31/05/2022		A. Le Gouellec		01/06/2022	
- Change		Drawn		Date		Approb.		Date	
Rev.		Change		Drawn		Date		Approb.	



Scale : 1:10 Sheet : 1 / 1 Drawn : smellaza

Combineur 4 voies 0.1 - 200 MHz 16 kW

RF characteristics

Frequency Range		0.1 - 200 MHz
Insertion Loss		≤ 0.5 dB 100 kHz - 80 MHz ≤ 1.2 dB 80 MHz - 200 MHz
Amplitude balance		≤ 0.1 dB
Phase balance		≤ 5 °
VSWR	Input	≤ 1.5 :1
	Output	≤ 1.4 :1
Isolation		> 15 dB
Input power handling		4000 W CW
Input failure maximum rating		1 input at 40%, 3 inputs at 100%
Output reflected power		≤ 2000 W CW

Mechanical features

Environment	0°C / +50°C
Input connectors	7/16 DIN female
Output connector	1-5/8" EIA flange
Cooling	(x4) Intake fan 18W 24VDC
Fan control	Jaeger male connector 3Cts (Rapid Series)
Material / Finish	Aluminum / Surtec 650 Grey paint on front side
Size	765 x 577 x 483 mm
Interface drawing	800304 1601-

Enregistrement des modifications

Rev.	Modification	Rédigé / modifié par :	Date	Vérifié par :	Date	Approuvé par :	Date
-	Création	S. MELLAZA	01/06/22	A. Le Gouellec	01/06/22		