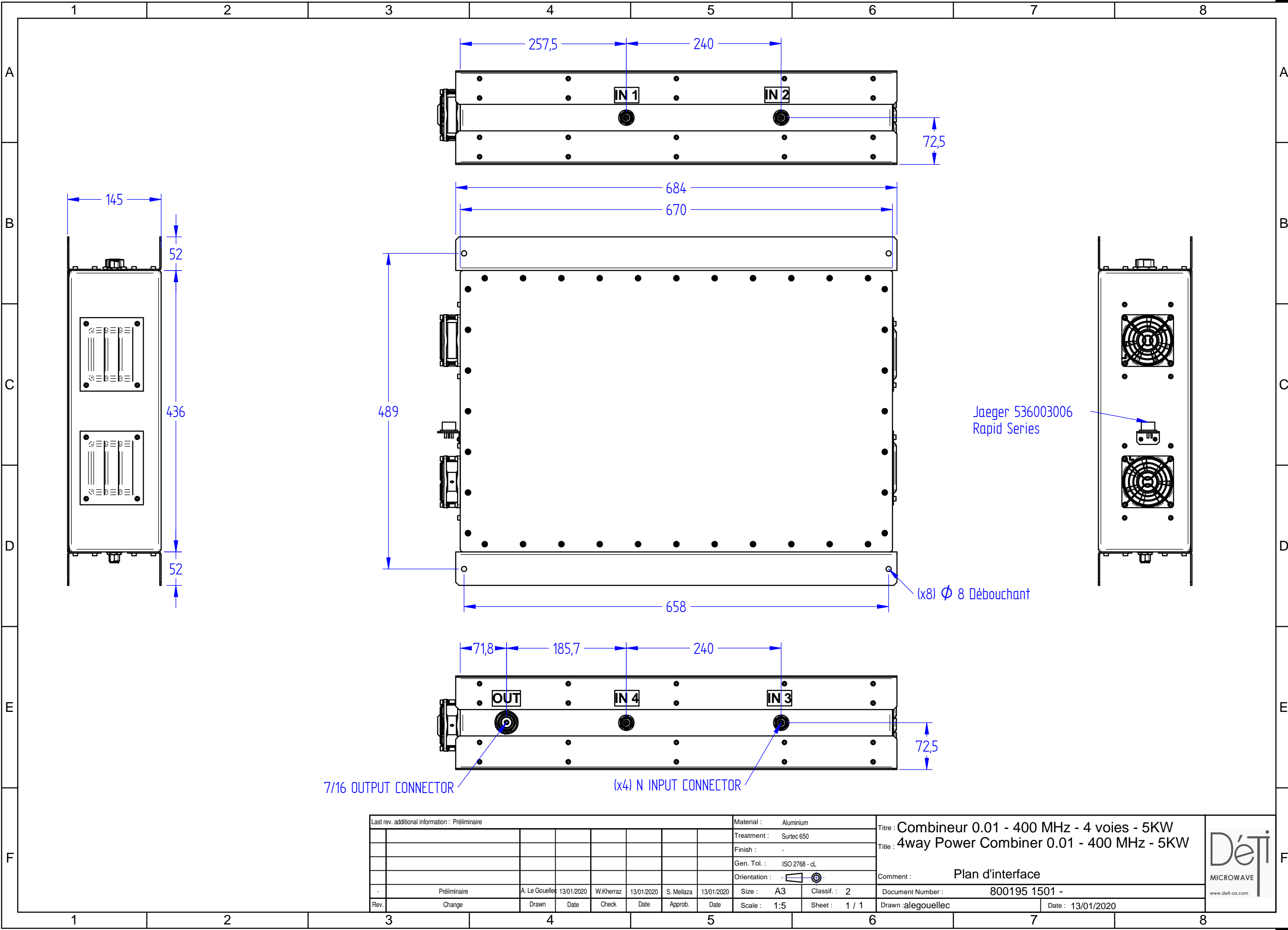


This document is subject to change without notice
This document is the exclusive property of DETI SAS and cannot be communicated to third parties or reproduced without prior written permission



Last rev. additional information : Préliminaire							Material : Aluminium		Titre : Combineur 0.01 - 400 MHz - 4 voies - 5KW	
							Treatment : Surtec 650		Titre : 4way Power Combiner 0.01 - 400 MHz - 5KW	
							Finish : -		Comment : Plan d'interface	
							Gen. Tol. : ISO 2768 - dL		Document Number : 800195 1501 -	
							Orientation :		Drawn : alegouellec	
- Préliminaire							Size : A3		Date : 13/01/2020	
A. Le Gouellec							Classif. : 2		Date : 13/01/2020	
13/01/2020							Scale : 1:5		Sheet : 1 / 1	
W.Kherraz							Sheet : 1 / 1		Date : 13/01/2020	
13/01/2020							Drawn : alegouellec		Date : 13/01/2020	
S. Mellaza							Date : 13/01/2020			
13/01/2020										
Change										
Drawn										
Date										
Check										
Date										
Approb.										
Date										



Combiner 4 ways 10 kHz – 400 MHz 5000W

Electrical Specification	
Frequency Range	0.01 – 400 MHz
Insertion Losses 10 - 100 KHz	< 0.2 dB
Insertion Losses 100 KHz - 200 MHz	< 1.2 dB
Insertion Losses 200 MHz - 250 MHz	< 1.5 dB
Insertion Losses 250 MHz - 400 MHz	< 2 dB
Amplitude Balance 10 KHz - 200 Mhz	< 0.1 dB
Amplitude Balance 200 MHz - 250 Mhz	< 0.15 dB
Amplitude Balance 250 MHz - 400 Mhz	< 0.3 dB
Phase Balance 10 KHz - 200 MHz	< 5°
Phase Balance 200 KHz - 250 MHz	< 8 °
Phase Balance 250 MHz - 400 MHz	< 10 °
Isolation 10 KHz - 400 MHz	> 15 dB
Input VSWR 10 KHz - 250 MHz	< 1.4
Input VSWR 250 MHz - 400 MHz	< 1.6
Output VSWR 10 KHz - 250 MHz	<1.4
Output VSWR 250 MHz - 400 MHz	<1.6
Input Power 10 KHz - 100 MHz	< 1500 W cw
Input Power 100 MHz - 200 MHz	< 1200 W cw
Input Power 200 MHz - 400 MHz	< 800 W cw
Max Power Return on Output	< 2500 W cw
Input failure maximum rating : - On one way: 1/8 of nominal power minimum and 100% on the other ways. - One to simultaneous ways : half of nominal power minimum and 100% on the two other ways	

ENVIRONNEMENTAL CONDITIONS

Operating Temperature :	From 0 °C to + 50 °C
Storage Temperature :	From - 40 °C to + 85 °C

MECHANICAL FEATURES

Input Connectors :	N Femelle
Output Connector :	7/16 Femelle
Diameter/Lengh :	710 x 540 x 145 mm
Material :	Aluminium
Finish :	Surtec
Mechanical Drawing :	800195 1501-
Weight :	31 kg

SPECIFICATIONS	800195 1001A	2 / 2	03/06/2022	COMBINER	060 559 - 01
-----------------------	---------------------	--------------	-------------------	-----------------	---------------------