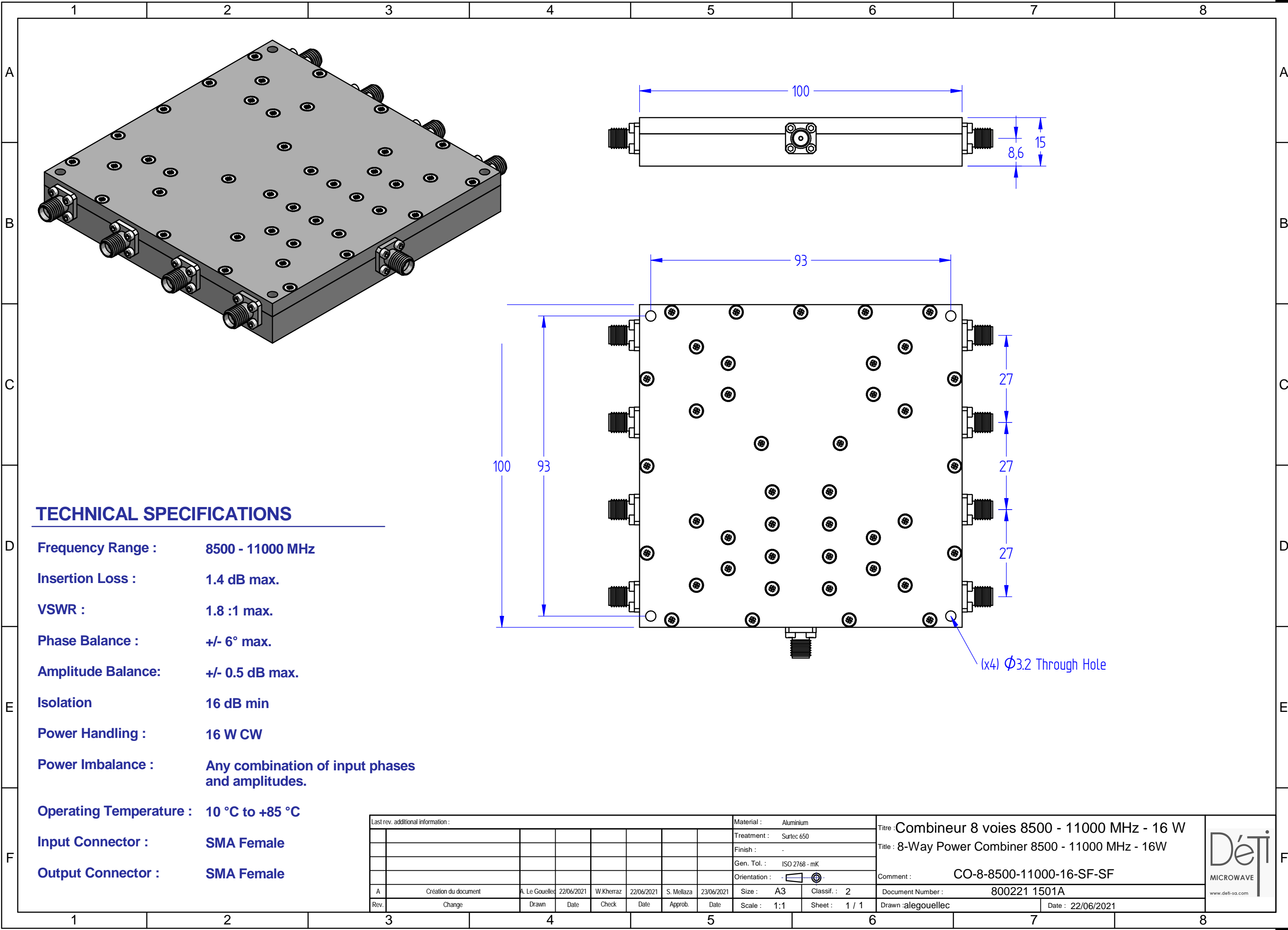


This document is subject to change without notice  
This document is the exclusive property of DÉTI SAS and cannot be communicated to third parties or reproduced without prior written permission



**TECHNICAL SPECIFICATIONS**

- Frequency Range :** 8500 - 11000 MHz
- Insertion Loss :** 1.4 dB max.
- VSWR :** 1.8 :1 max.
- Phase Balance :** +/- 6° max.
- Amplitude Balance:** +/- 0.5 dB max.
- Isolation** 16 dB min
- Power Handling :** 16 W CW
- Power Imbalance :** Any combination of input phases and amplitudes.
- Operating Temperature :** 10 °C to +85 °C
- Input Connector :** SMA Female
- Output Connector :** SMA Female

Last rev. additional information :							Material : Aluminium		Titre : Combineur 8 voies 8500 - 11000 MHz - 16 W	
							Treatment : Surtec 650		Title : 8-Way Power Combiner 8500 - 11000 MHz - 16W	
							Finish : -		Comment : CO-8-8500-11000-16-SF-SF	
							Gen. Tol. : ISO 2768 - mK		Document Number : 800221 1501A	
							Orientation :		Drawn : alegouellec	
A Création du document			A. Le Gouellec		22/06/2021		W.Kherraz		22/06/2021	
S. Mellaza			23/06/2021		Scale : 1:1		Sheet : 1 / 1		Date : 22/06/2021	
Rev.			Change		Drawn		Date		Check	

